

OPC / N2

FIGURE 4

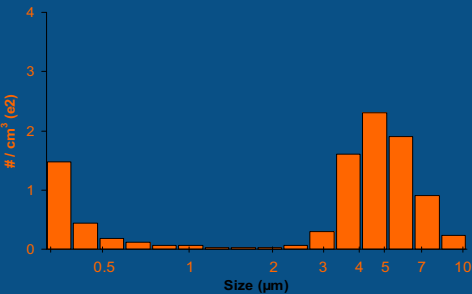


Figure 4 shows the TSI 3300 displayed particle size distribution for the alumina calibration aerosol, as measured by University of Hertfordshire.

Calculated PM from particle size includes assumptions about particle density and refractive index which will vary with application.

- Two Alarm points
- Two Alarm relays
- 4-20mA output signal
- Internal Buzzer 86 Db

POWER
220 Vac

INDICATORS

- ALARM - RED
- FAULT - AMBER
- POWER - GREEN

PROTECTION
Ip20



GDSAINDUSTRIAL

PARTICLE COUNTER



MEASUREMENT

Particle range Spherical equivalent size (based on RI of 1.5) 0.38 to 17
Size categorisation Number of software bins 16
Sampling interval Histogram period (seconds) 1.4 to 10
Total flow rate (typical) L/min 1.2
Sample flow rate (typical) mL/min 220
Max particle count rate Particles/second 10,000
Max coincidence probability %concentration at 10⁶ particles/L 0.84
%concentration at 500 particles/L 0.24